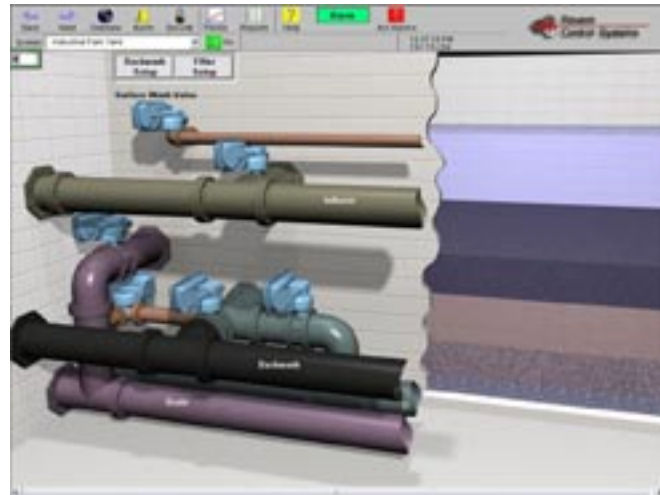
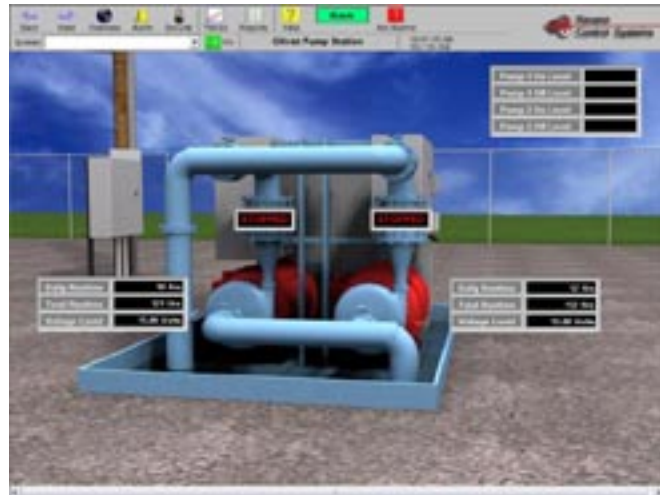
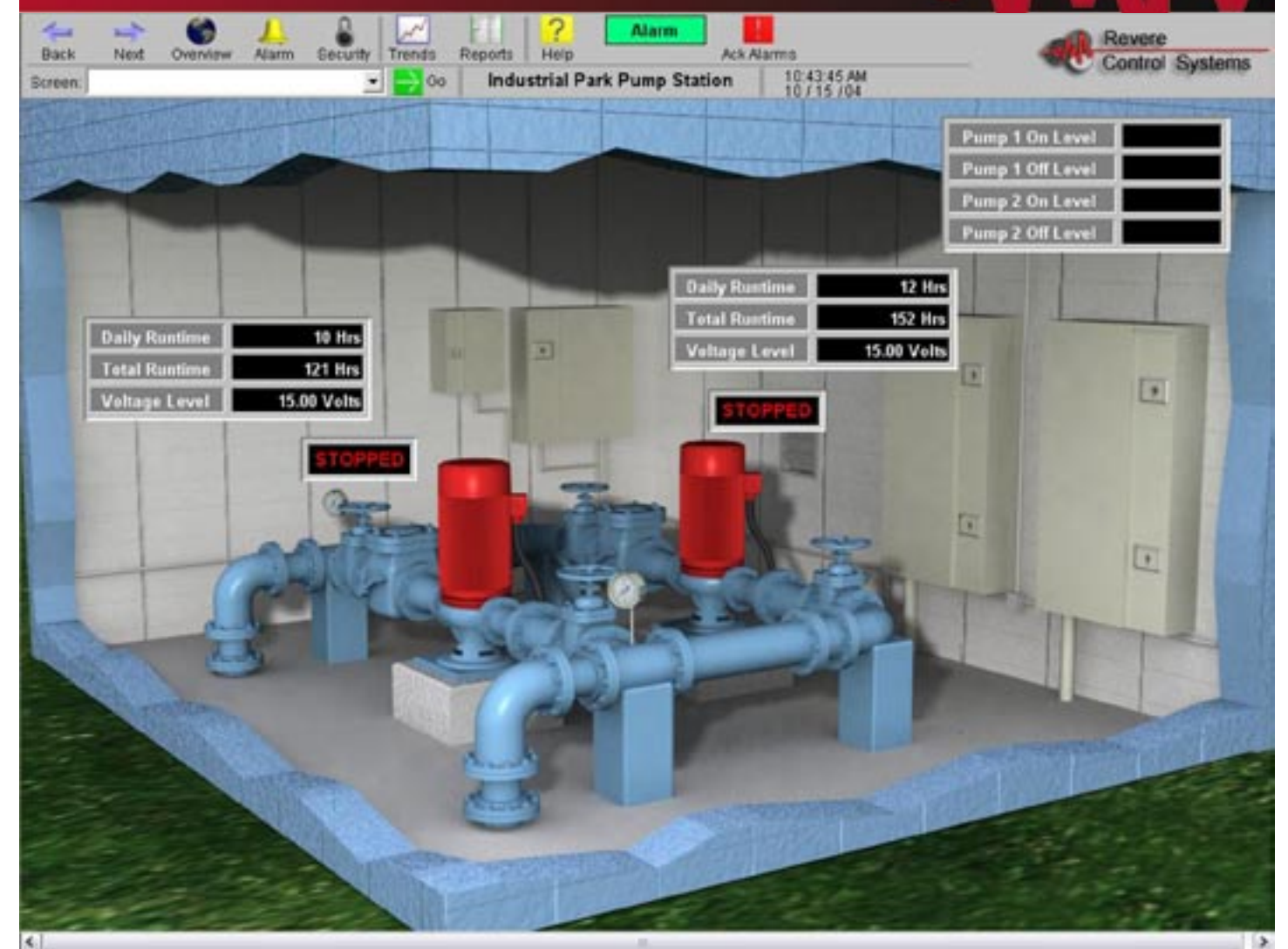


Bringing Equipment to Life

This technology works for virtually every type of screen your SCADA system uses.



3D Graphics For Water-Wastewater SCADA



Human Machine Interface (HMI) systems have taken a giant step forward with the ability to incorporate 3D graphics into any of the major software packages. This includes, Wonderware, Intellution, RSVIEW, and Citect. Using sophisticated, state-of-the-art software, our engineers can now give your operators screen images that faithfully replicate their actual equipment. Key elements are as follows:

- Digital photographs are converted into recognizable 3D graphics of your water tanks, pumps, valves, process equipment, piping, and other equipment being incorporated into your control system.
- Operators can watch animated levels change, and equipment rotate, imitating actual operation and providing operators with a higher level of understanding and recognition of actual equipment performance and response.
- We can adapt your present SCADA system to this 3D technology or implement it on your next project.

2240 Rocky Ridge Rd.
Birmingham, AL 35216
800.536.2525; fax: 205.824.0408
www.reverecontrol.com



Birmingham • Nashville • Orlando • Raleigh

From Photography to 3D Graphics

Multiple digital photos are taken of each piece of equipment, and the photos are then rendered into 3D images that can be used with HMI programs to achieve a realistic-looking result.

In the examples shown, photos at a pump station are used to create the control screen for that station, showing pump status and operating parameters. And photos of a water tank are used to create the image used for the tank control screen that monitors level and trends.

