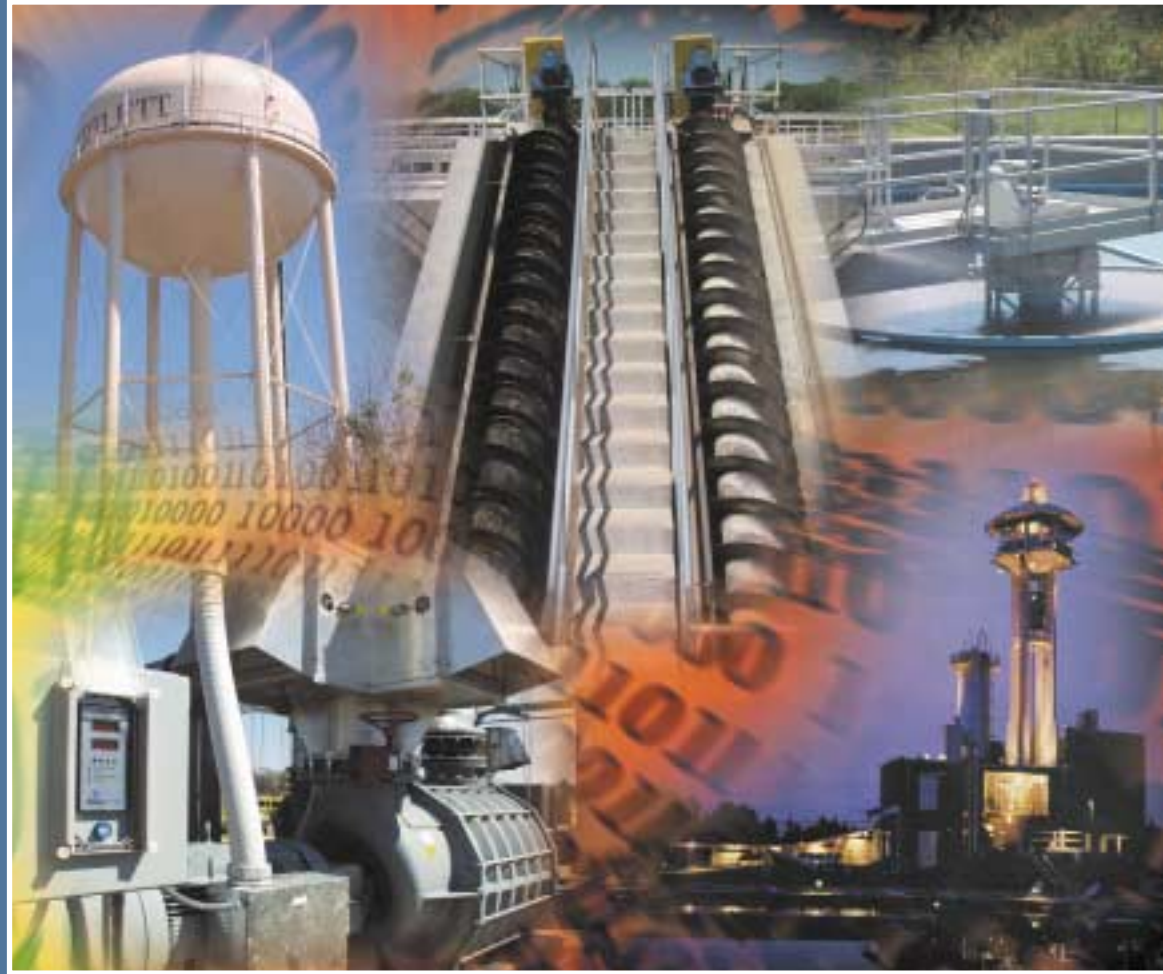


# Municipal Control Systems



Revere  
Control Systems

ENGINEERED TO SERVE



2240 Rocky Ridge Road  
Birmingham, Alabama 35216  
(800) 536-2525  
(205) 824-0004  
Fax (205) 824-0408

[www.reverecontrol.com](http://www.reverecontrol.com)

Email: [revere@reverecontrol.com](mailto:revere@reverecontrol.com)



We offer a full range of services to support your control systems needs. These include the following:

- Conceptual design
- Cost estimating
- Detail engineering
- Panel Production
- Painting and fabrication
- Real-world simulation testing
- Comprehensive documentation
- Training, both in-house and on-site
- Installation management
- Technical support, both on-site and remote

We can bring any combination of these services to bear on a project depending on your particular circumstances. We can further augment your staff by performing engineering feasibility studies and providing recommended solutions.

## Radio SCADA

Whether your system involves water distribution or wastewater collection, SCADA plays an important role in overall system performance. Our experience with radio telemetry and SCADA is extensive. We have designed systems as small as four remote units and as large as 100. We are familiar with all major brands, including Allen-Bradley, Bristol Babcock, Modicon, and Motorola, allowing us to select the components that provide you with the best price-performance combination.

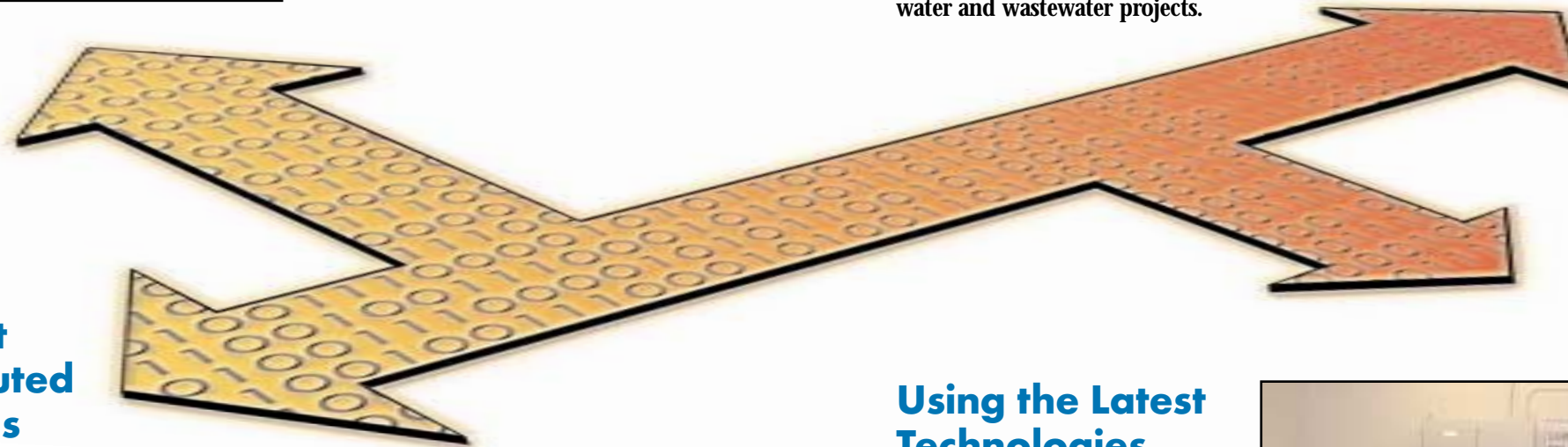
# Municipal Control Systems Integration

## Specialist in Water and Wastewater Applications

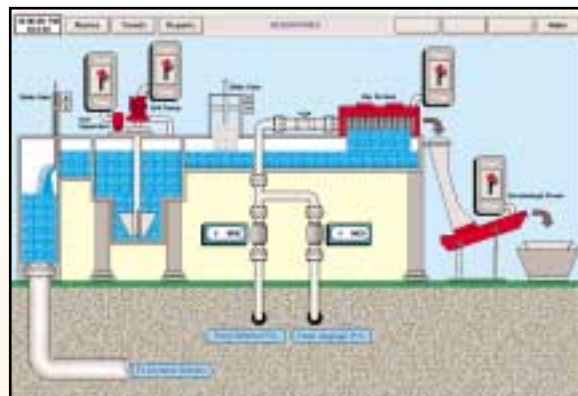


Since 1980, we have specialized in applications involving water treatment and distribution, as well as wastewater collection and treatment. Tank level monitoring. Pump and valve controls. Lab equipment. Bubbler panels. Aerator controls. Clarifiers. Radio telemetry. SCADA. Computer software. Or any other part of the instrumentation and controls aspects of a plant. We have the skills and experience to handle your project effectively and efficiently.

For more than 20 years, we have been serving the needs of municipalities and private owners. Our extensive list of completed projects spans the full range of sizes, from new plants to small expansions. Our role is to apply our considerable expertise to take the worry and the hassle off your shoulders, providing you with the confidence that your system will perform as intended. We have worked with many of the nation's leading consulting engineering firms to help owners throughout the Southeast, and beyond, with their water and wastewater projects.



## In-Plant Distributed Systems



Your control systems are the heart of your plant. All of your pumps, filters, clarifiers, tank levels, and other systems are monitored and controlled through a network of PLCs and operator terminals. Our expertise with a wide variety of PLC types, operator-machine interfaces, and network communication protocols allow

us to custom design your system to produce optimum performance for your particular circumstances. Our extensive use of user-friendly, simple-to-operate computer screens make complex monitoring and control functions less intimidating. We can also provide your operators with on-site training to further assure a smooth startup and equally smooth ongoing operations.

## Using the Latest Technologies

Technology is our business, with approximately 30 percent of our employees holding engineering degrees. Our engineers and technicians regularly participate with our vendors in learning sessions to stay abreast of the latest products, features, and capabilities of the components and equipment that we use. We maintain our expertise in the latest control technologies, operator-machine interfaces, and other computer technologies. And, more importantly, we know how to determine which ones are the best fit for your situation.



Experienced in the following major hardware and software technologies:

### Operator Machine Interface (OMI) Software

- Wonderware
- FIX DMACS
- Genisis
- RSView
- GE Cimplicity

### Communications

- LAN/WAN  
(Windows 2000, Windows NT)
- Devicenet™, ProFibus™, Seriplex™
- Radio (MAS, Spread Spectrum)
- Leased line

### Program Logic Controllers (PLC)

- Allen-Bradley
- Siemens/TI
- Modicon
- Bristol Babcock
- Automation Direct
- General Electric

Specific examples of work for these industries can be viewed on our Web site at [www.reverecontrols.com](http://www.reverecontrols.com)

(800) 536-2525

(205) 824-0004

Fax (205) 824-0408

[www.reverecontrol.com](http://www.reverecontrol.com)

Email: [revere@reverecontrol.com](mailto:revere@reverecontrol.com)